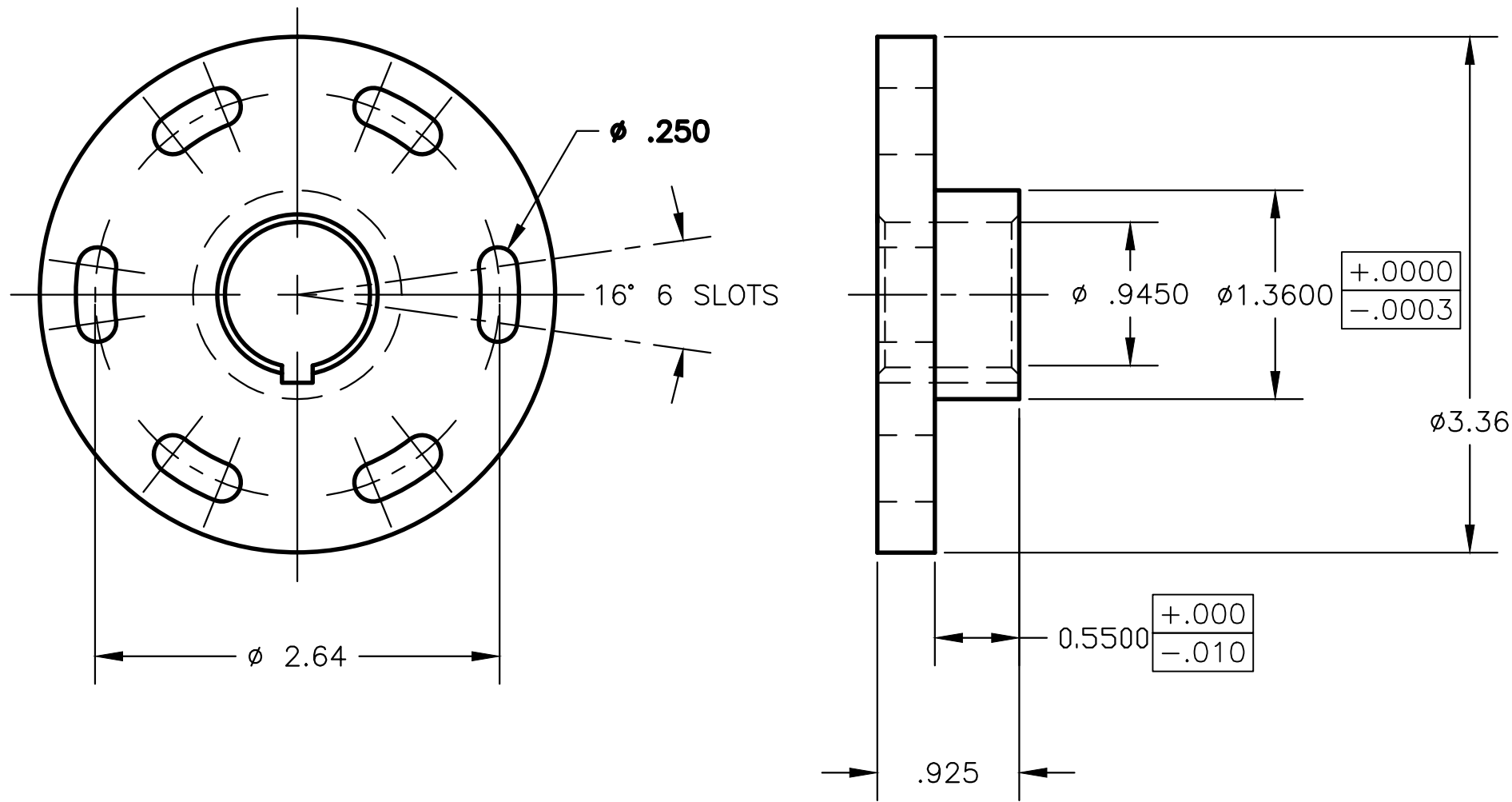


MACHINE FROM ALUMINUM  
SLOTS NEED TO ALLOW A 1/4 20  
SOCKET HEAD CAPSCREW TO HAVE 16  
DEGREES OF TRAVEL



WEXFORD-MISSAUKEE CAREER TECHNICAL CENTER

DRAWN BY:  
WALTER DUMONT

DRAWING NAME:  
INNER CAMSHAFT DRIVE PULLEY

DATE DRAWN:  
2-23-2010

SCALE: 1:1 UNITS: IMPERIAL PAPER SIZE: ANSI B (12"X 18")

DRAWN WITH AUTOCAD 2010